

# gloss photo paper

## Instructions

### Before Printing

- Only print using an inkjet printer.
- Handle paper by the edges to avoid getting fingerprints on glossy printable surface.

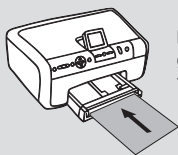
*TIP: Print your photo or project on plain paper first to ensure correct size and image position. (Use Fast or Draft mode to conserve ink.)*

### Printing

1. Load paper into tray according to your printer's manual.

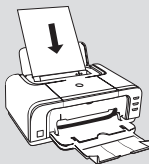
*TIP: We recommend single-sheet feeding rather than stacking in tray.*

#### Front Loading Printers



Load with  
glossy side  
facing down

#### Top Loading Printers



Load with  
glossy side  
facing forward

2. Select Print within menu.
3. Click Preferences, Properties or Options button (depending on your printer):
  - Choose 'Portrait' or 'Landscape' Orientation and 'Letter' Size.
  - Set Media type to Everyday Gloss, Semi-Gloss or Advanced Photo Papers.

*TIP: Refer to your printer manual for specific settings for your printer model.*

### Storage

- Store paper in packaging, flat and away from moisture and humidity.
- Avoid exposing printed or unprinted paper to bright lights or direct sunlight for extended periods of time.